

# RIMAX

*c e r a m i c g r i n d i n g b e a d*



*RIMAX*

*CERAMIC GRINDING BEAD*



# RIMAX

*ceramic grinding bead*



RIMAX 2.5-2.8mm.



RIMAX 2.0-2.2 mm.



RIMAX 1.8-2.0 mm.



RIMAX 1.6-1.8 mm.

## RIMAX CERAMIC GRINDING BEAD

The Rimax ceramic grinding bead is produced from a specially formulated zirconium silicate, using a carefully controlled dripping technique followed by high temperature sintering and surface conditioning.

The unique combination of the Rimax bead's composition, manufacturing process, and surface conditioning yields greater wear resistance, resulting in low contamination and improved cost effectiveness.

## PRIMARY FEATURES

- **High density**

The Rimax bead's high density (typically 4.0 gr./cm<sup>3</sup>) ensures superior milling efficiency, particularly in medium and high viscosity formulations, improving throughput rates and allowing fewer passes.

- **Conditioned, shiny surface**

Rimax beads are preconditioned. The smooth shiny surface of the bead provides reduced mill and media wear when grinding hard materials.

- **Fully solid, spherical shape**

The Rimax bead has a fully solid, spherical shape, and does not contain air pockets or round surface satellites. Rimax beads do not break during the milling process. The user benefits from reduced cleaning time and the prevention of clogging. The bead's high sphericity also contributes to decreased mill and media wear.

- **Uniform size**

The unique dripping process produces the Rimax beads in a very narrow range of sizes (0.2 mm.), eliminating any undersized beads that would require separation. This precise sizing guarantees good flowability of the slurry and increases media life.



RIMAX 1.2-1.4mm.



RIMAX 1.0-1.2 mm.

#### QUALITY SYSTEM

- Rami's dedication to quality has been enhanced by the introduction of ISO-9002 Quality Standards.
- Rami is a registered BSI capability assessed firm since 1994.
- Rami's materials and manufacturing are continuously checked according to the company's own clearly defined internal procedures.
- Statistic process control is implemented for the main production parameters.
- Batches traceability is assured and final inspection is applied according to specific instructions.

- **Fields of application-milling and dispersion of:**

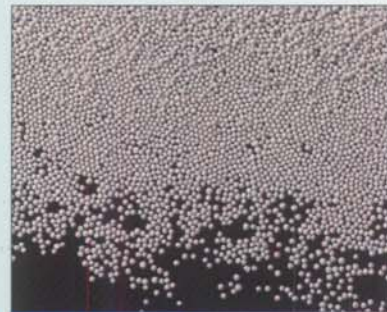
paints, inks, pigments, dyes, magnetic coatings, chemicals, minerals, ceramics, cosmetics, pharmaceuticals.

- **Chemical composition (%):**

ZrO <sub>2</sub>	58
SiO <sub>2</sub>	37
others	5

- **Physical properties (typical):**

Bead density (gr/cm <sup>3</sup> )	min 4.0
Bulk density(kg/l)	2.4
Surface	shiny
Dye penetration	none
Crushing strength (kg/bead ø 1.8)	80
Hardness Vickers (kg/mm <sup>2</sup> ) load 10 kg	800



RIMAX 0.8-1.0 mm.



RIMAX 0.6-0.8 mm.

**Sizes available (mm.):**

2.5-2.8  
 2.4-2.6  
 2.2-2.4  
 2.0-2.2  
 1.8-2.0  
 1.6-1.8  
 1.4-1.6  
 1.2-1.4  
 1.0-1.2  
 0.8-1.0  
 0.6-0.8

**Particle size conversion:**

US Mesh	Inches	Millimeters
7	0.1102	2.80
8	0.0929	2.36
10	0.0787	2.00
12	0.0669	1.70
14	0.0551	1.40
16	0.0465	1.18
18	0.0394	1.00
20	0.0335	0.85
25	0.0280	0.71
30	0.0236	0.60



RAMI CERAMIC INDUSTRIES LTD.  
 Industrial Zone C, P.O.Box.785 Nazareth Illite 17000, Israel  
 E-mail: nazareth@rami.co.il website:www.rami.co.il

Tel: 972-4-6088400, Fax: 972-4-6578815

Printed: 04/2000

